

The Library Partnership ...A Neighborhood Resource Center



The Library Partnership

...A Neighborhood Resource Center

- Alachua County Library District
- The Partnership for Strong Families
- Florida Department of Children and Families
- Casey Family Programs



The Library Partnership

...A Neighborhood Resource Center

- What is it?
- Who is involved?
- How it happened
- How it works
- Why it is needed
- Why it is effective
- Preliminary results



The Library Partnership

...A Neighborhood Resource Center

➤ What is it?

- Central community resource to strengthen families
- Library E-government & social services providers co-located
- Self Sufficiency, Family Support & Child Development, Health & Safety

The Library Partnership

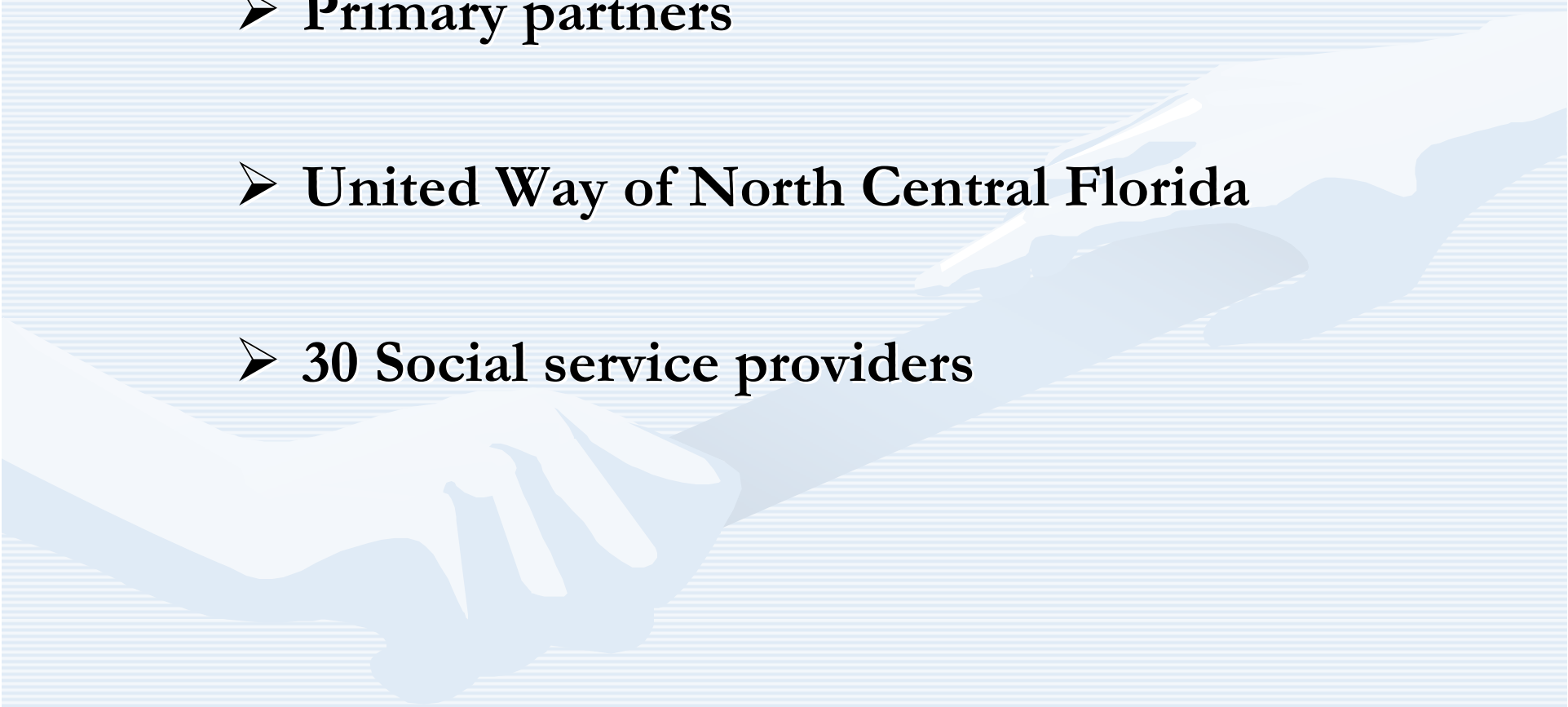
...A Neighborhood Resource Center

- **Who is involved?**

- **Primary partners**

- **United Way of North Central Florida**

- **30 Social service providers**



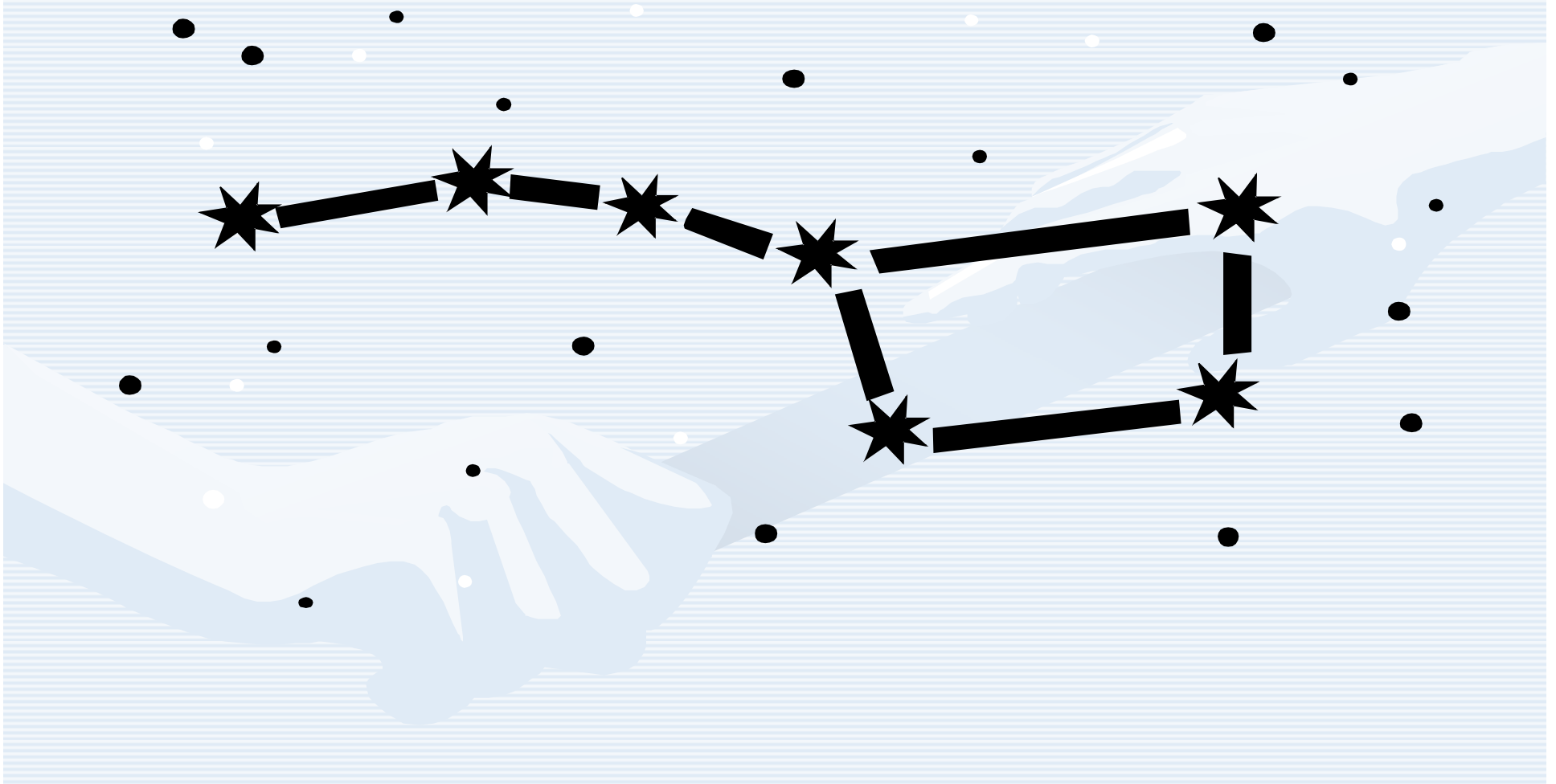
The Library Partnership ...A Neighborhood Resource Center



The Library Partnership

...A Neighborhood Resource Center

➤ How it happened



The Library Partnership

...A Neighborhood Resource Center

➤ How it happened

➤ DCF, PSF, Casey Family Programs

- December 2007 – Casey Family Programs funding to develop concept to reduce children from entering the foster care system targeting vulnerable communities
- Identified “hotspots” by zip code
- Defined Neighborhood Resource Center concept
- Developed list of potential social service providers
- June 2008 – met with agencies to develop structure

The Library Partnership

...A Neighborhood Resource Center

➤ How it happened

➤ Alachua County Library District

- Search for an Eastside Branch site
- Seeking partner – UF, SFC, UF/Shands Hospital, City of Gainesville, School Board, local developers
- FY 2008/09 Budget Plan – identified possibility of storefront library
- FY 2008/09 – started expansion of Millhopper Branch Library, opened temporary, smaller branch



The Library Partnership

...A Neighborhood Resource Center

➤ How it happened

- October 2008 - At Alachua County Children's Alliance, Library learns of 32609 Project
- DCF, PSF, ACLD visit sites and select one
- November 2008 - ACLD Governing Board informed
- December 2008 - ACLD works on lease and sub-lease with PSF
- January 2009 - ACLD Governing Board approves leases
- February 2009 - Design and build-out begin
- June 15, 2009 - Soft opening
- July 8, 2009 - Grand opening
- August 1, 2009 – Community Day Event









The Library Partnership

...A Neighborhood Resource Center

➤ How it works

- Name combines ACLD and PSF
- Designed together with architect
- Staff from both agencies work together
 - Coordinate hours of service
 - Work schedules
 - Programs
 - Volunteers

The Library Partnership

...A Neighborhood Resource Center

➤ How it works

➤ ACLD

- Full service library
- E-government emphasis

➤ PSF

- Area CBC under contract to DCF
- Provides child/family services in support of DCF
- Coordinates social service agencies that are subcontracted to evaluate, support, and monitor

The Library Partnership

...A Neighborhood Resource Center

➤ Why it is needed

- Highest incidence of child maltreatment
- Highest % of total teen births
- Second highest % of Medicaid births
- Second highest % without high school diploma
- Third highest % of single parent families
- One of most racially diverse areas in Florida

The Library Partnership

...A Neighborhood Resource Center

- Why it is effective
 - Social service agencies and e-government providers (public library) housed together
 - Work of social service agencies and library complement each other
 - Cost effective and efficient
 - Operational costs shared
 - Share use of children's space and meeting room
 - Agencies provide many programs

The Library Partnership

...A Neighborhood Resource Center

- **Why it is effective – Library perspective**
 - **Not for all libraries or community**
 - **Public library commitment to e-government**
 - **Created dialogue between agencies recommending and providing e-government services**
 - **In many cases, libraries designed their approach to e-government without input from providers**
 - **Collaboration provides better planning and approaches to meet the client's needs**

The Library Partnership

...A Neighborhood Resource Center

- **Why it is effective – Library perspective**
 - **Indirect benefits**
 - Enhances library's place in the community
 - Creates more support for library services by being ingrained in social service network – new advocates
 - More opportunities for library to be invited to table
 - More opportunities for specific collaborations
 - Brings to library persons of all ages who might not otherwise use the library

The Library Partnership

...A Neighborhood Resource Center

➤ Preliminary results

- In August 2009, approximately 6,000 visits
- Issued more than 200 new library cards
- Program attendance ????????
- Some partners making better use of facility, some are not and may drop out
- United Way Day of Caring focused on the area
- Discussion of expanding by using Harlem Children's Zone model













The Library Partnership

A Neighborhood Resource Center



valuing children + strengthening families + engaging the community